



GF-TADs

GLOBAL FRAMEWORK FOR THE
PROGRESSIVE CONTROL OF
TRANSBOUNDARY ANIMAL DISEASES



Food and Agriculture
Organization of the
United Nations



WORLD ORGANISATION
FOR ANIMAL HEALTH



Update on ASF situation for Republic of Korea

Dr. Hae Eun KANG

Foreign Animal Disease Division

Animal and Plant Quarantine Agency

Gimcheon, Republic of Korea



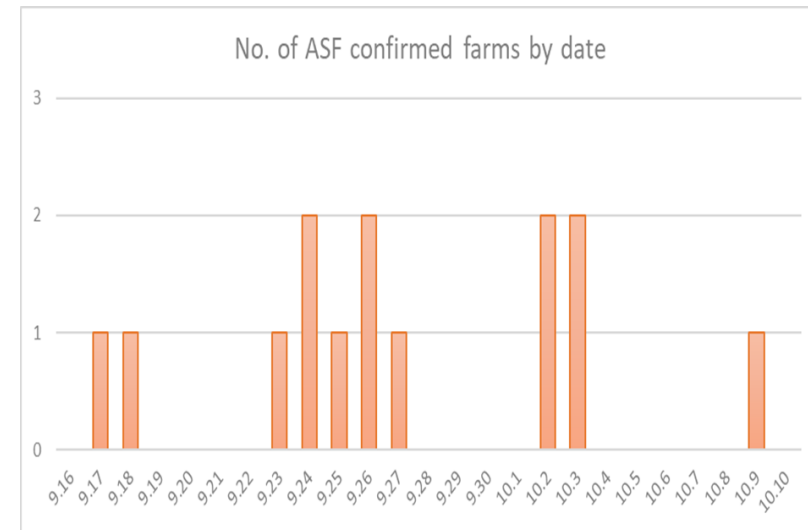
Current ASF status

The first case of ASF in Korea

- ❖ A suspected case at a farrow-to-finish farm of 2,450 pigs including 350 sows in Paju city, Gyeonggi province (16 September 2019)
- ❖ Five sows in maternity barn: anorexia for 2~3 days, fever ($>40^{\circ}\text{C}$) and death
- ❖ Collection of samples: (provincial veterinary services) blood, spleen, liver & lymph nodes
- ❖ Real time PCR : positive for all samples
- ❖ The suspected case was confirmed as the first outbreak of ASF in Korea at 06:00 on 17 September 2019

ASF outbreaks in Korea

- ◎ In 2019 at pig farms :14 cases (2019.9.16~10.9)
 - Gyeonggi Prov. 9 cases: Paju 5, Yeoncheon 2, Gimpo 2
 - Incheon City 5 cases: Ganghwa 5



- ◎ In 2020 at pig farms :2 cases (2020.10.8~10.10)
 - Gangwon Prov. Hwacheon 2

- ◎ Wild boars : 1,024 heads (2019.10.3~2021.2.3)



Outbreaks of African swine fever

A detailed map of Gangwon Province, South Korea, showing its administrative boundaries and major cities. The map is color-coded by region: yellow for the northern part, light green for the central-eastern part, light blue for the southern coastal area, and pink for the western part bordering Gyeonggi Province. Major cities are labeled in both Korean and English. Neighboring provinces are also indicated: Gyeonggi Province to the west, Chungcheong Province to the south, and Seoul to the southwest. The date "October 2020" is printed at the top.

City	Korean Name	English Name
Cheorwon	철원	Cheorwon
Hwacheon	화천	Hwacheon
Yanggu	양구	Yanggu
Inje	인제	Inje
Chuncheon	춘천	Chuncheon
Hongcheon	홍천	Hongcheon
Hwangseong	황성	Hwangseong
Pyeongsang	평창	Pyeongsang
Jeoncheon	전주	Jeoncheon
Yeoncheon	연천	Yeoncheon
Pocheon	포천	Pocheon
Yangju	양주	Yangju
Namyangju	남양주	Namyangju
Anseong	안성	Anseong

Losses by ASF in Korea

2019

- ❖ Preventive culling : 380,963 pigs from 248 farms
- ❖ Purchasing by government in high-risk areas :
65,557 pigs from 125 farms
- ❖ Approximately 130 billion KRW (116 million USD)

2020

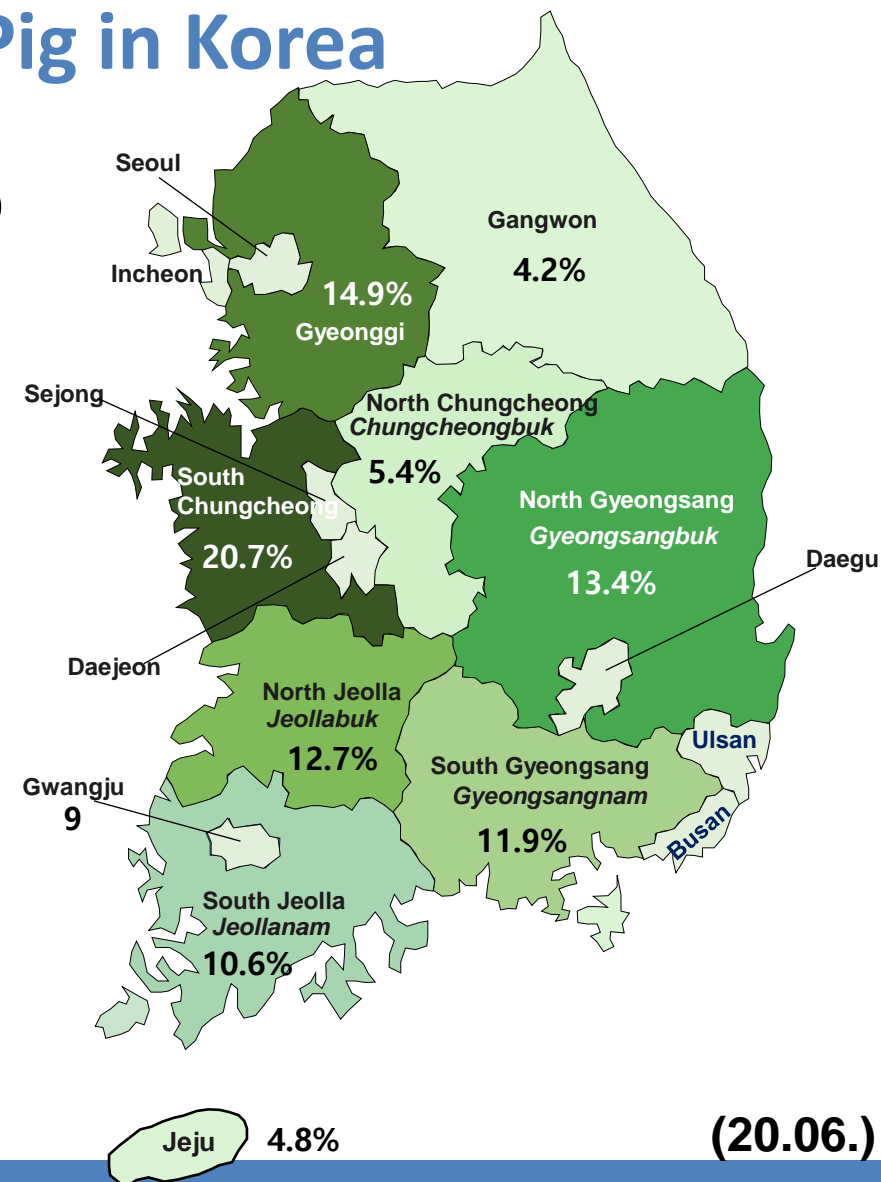
- ❖ Preventive culling : 4,077 pigs from 5 farms



Production of Pig in Korea

Number of Pigs : 11,088,000 (20.06.)

Number of Sows : **1,063,000**





Production of Pig in Korea

Number of Pigs : 11,088,000 (20.06.)

Number of Sows : 1,063,000

Number of Pig Farms : 6,137

Meat Consumption : 49.1 Kg/person

Pork Consumption : 24.5 Kg/person

Pork Price per Kg : about 3.5 USD



<1,000 : 2,646

1,000~5,000 : 3,072

>5,000 : 419

Mean 1,900/farm



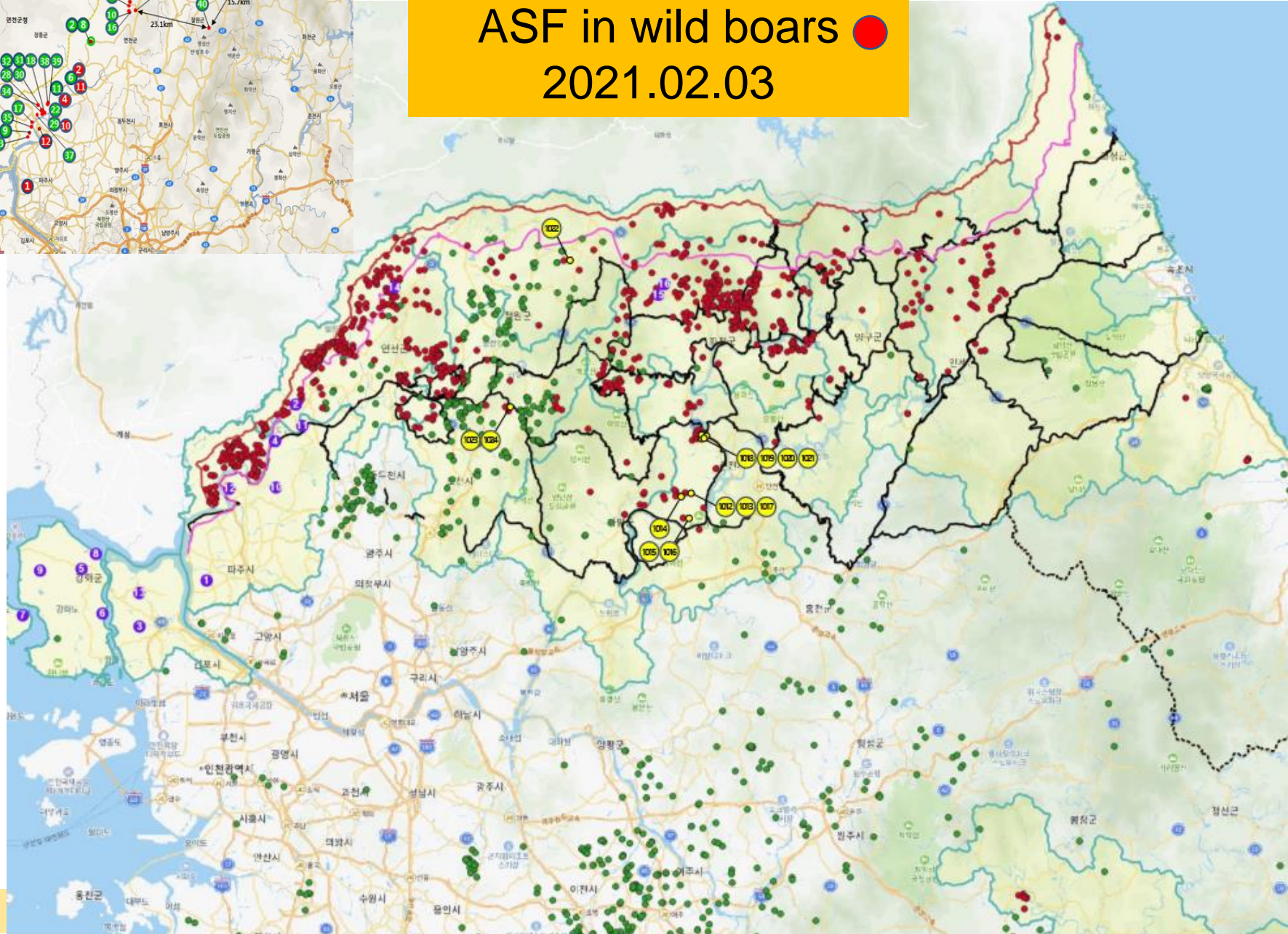
Wildlife

Spread of ASF in wild boars, Korea

2019.12.07



ASF in wild boars ●
2021.02.03





National Control Policy against ASF

Prevention

- **Border control : personal illegal imports**
- **Ban on swill feeding**
- **Biosecurity and disinfection**
- **Education and training**
- **Public awareness**

Detection

- **Surveillance : passive surveillance, high-risk groups**
- **Early detection : animal disease notification system**
- **Capacity building for diagnosis of ASF**
- **Monitoring in high risk areas**

Control

- **Reporting suspected cases**
- **Depopulation and disposal**
- **Disinfection**
- **Movement control**
- **Epidemiological investigation**
- **Restocking**



Control measures to limit the spread of ASF among wild boar

- Fencing
- Population control
- Active carcass search
- Safe disposal of carcasses



Thank you. 감사합니다.